



Pass App for Android Installation Manual v 1.0 – 25 /9/2019

This manual describes in short how to install and run the Pass App for Android.

As most charging cradles no longer have USB connectivity to a desktop, the choice was made to allow communication through BT mode for batch operation of the software and WiFi for realtime operations. Currently Mailroom support BT batch mode, Stock support WiFi operation

In both cases, always make sure you downloaded the latest version of the Desktop software you are going to use and the Android app from our downloads area. You can find this on <https://www.britsoft.com/downloads>

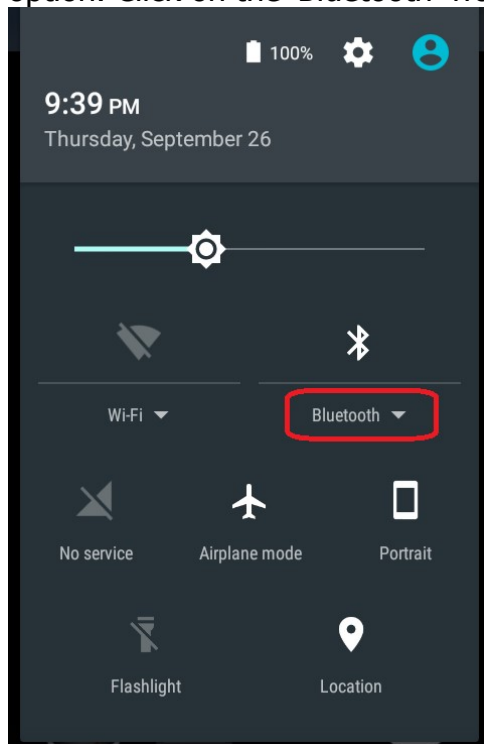
If you are going to use Bluetooth or WiFi communication, in both cases you will need Pass Link (plink.exe). You can find this in the start menu after you installed the relevant desktop application.

Configure Bluetooth – Pairing the Device.

In order to communicate through Bluetooth, the Android device needs to be paired with the desktop/laptop. This has to be the computer that is also used to run the desktop application. (Mailroom, Storeroom etc)

First on the PC, make sure that there is a Bluetooth adapter available and that this is enabled.

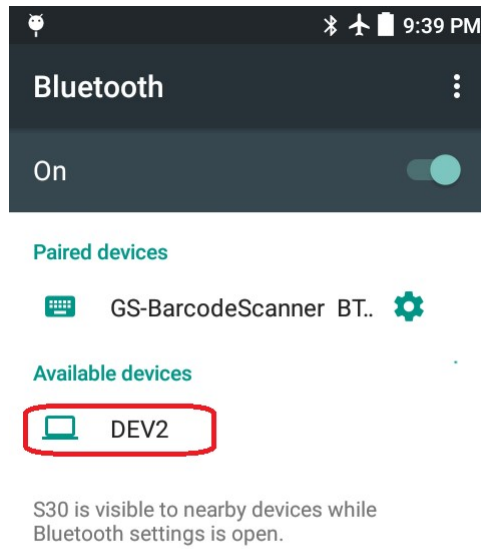
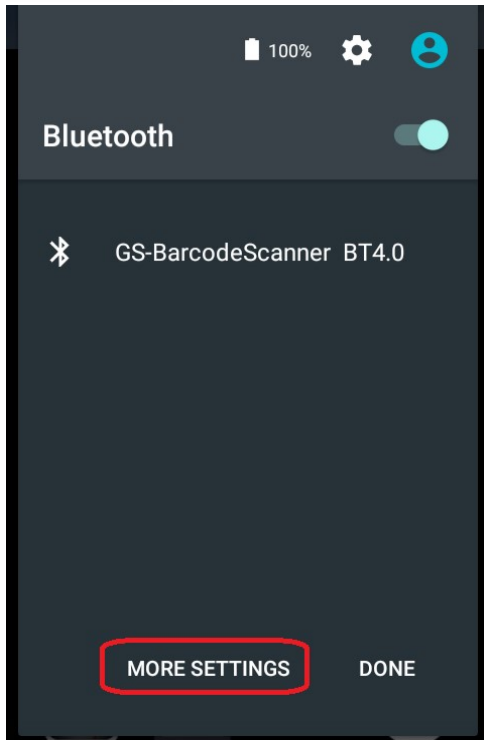
Then on the Android Device, swipe down twice until you see the Bluetooth option. Click on the 'Bluetooth' word.



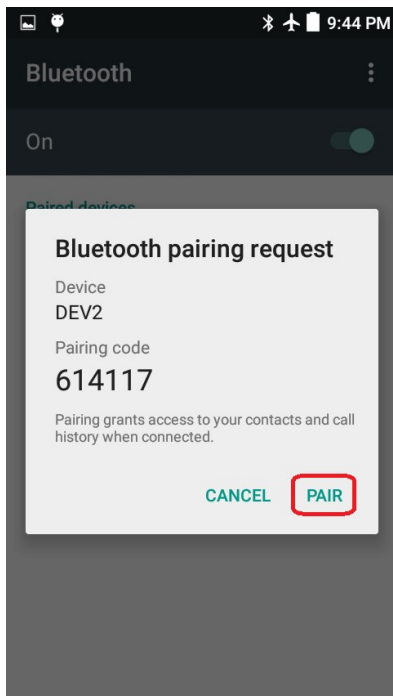
Select More Settings, then click on your desktop / laptop from the list of available devices.



Pass App for Android Installation Manual v 1.0 – 25 /9/2019



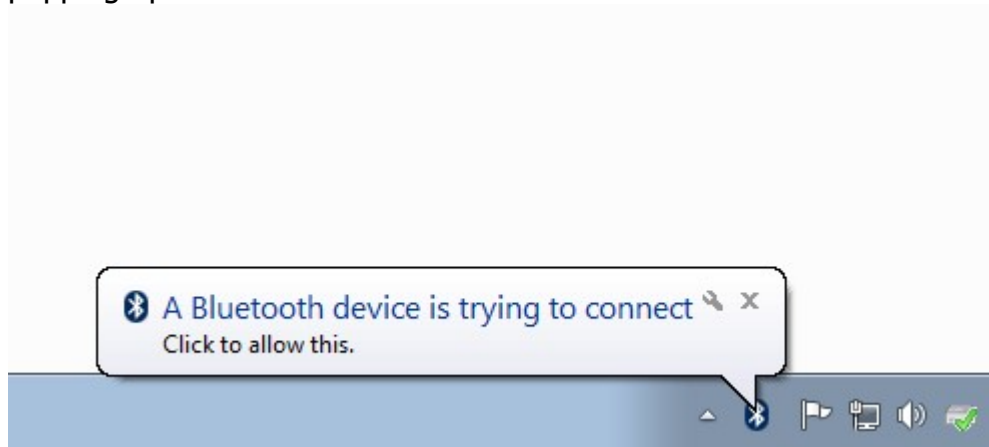
This will bring up a pairing request as seen in the following screenshot.



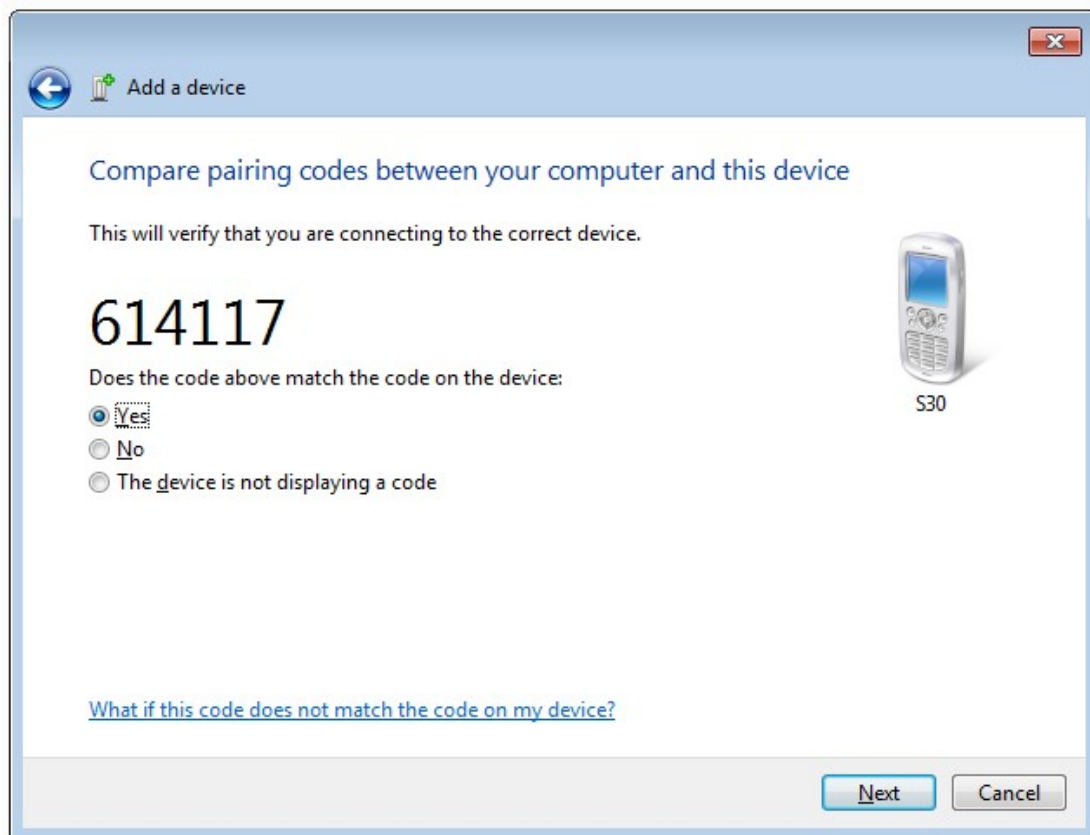


Pass App for Android
Installation Manual
v 1.0 – 25 /9/2019

At the same time, at your desktop you should see the following message popping up:



Click on the message. It will up a screen that should display the same code.



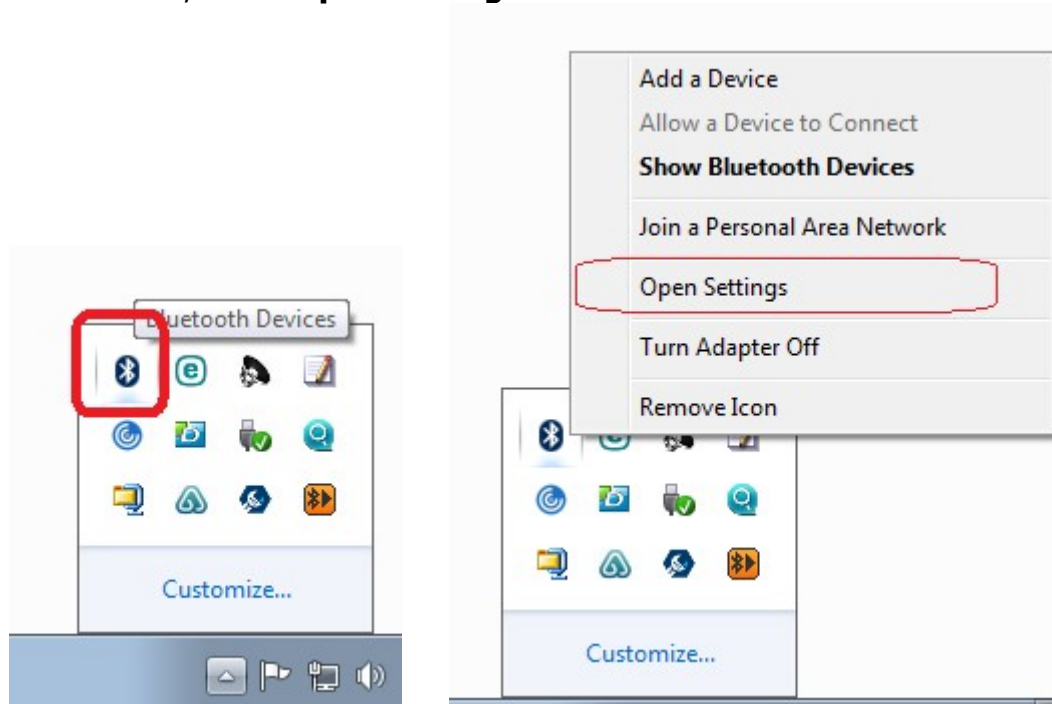
If both codes are the same, then press **Pair** on the pda and press **Next** on the pc.

After these steps the Android device has been paired with the Desktop PC.

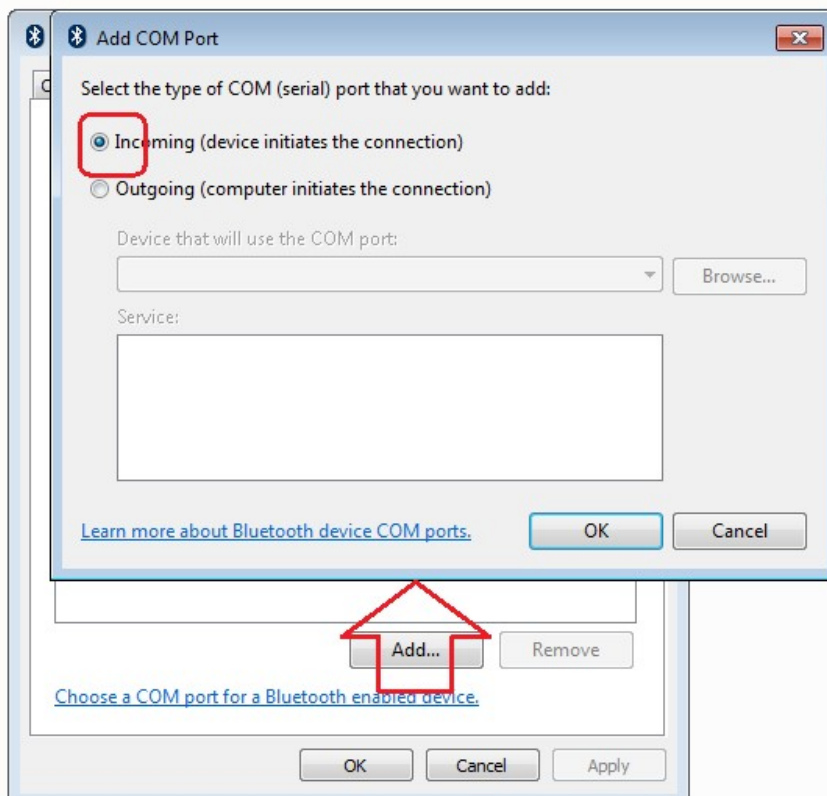


Configure Bluetooth – Setting up Com Port.

The following step is to create a virtual com port on the pc allowed the Android device to communicate with the PC. To do this, click on the little arrow in the bottom right of the screen, and right click on the BT icon. In the menu, select **Open Settings**



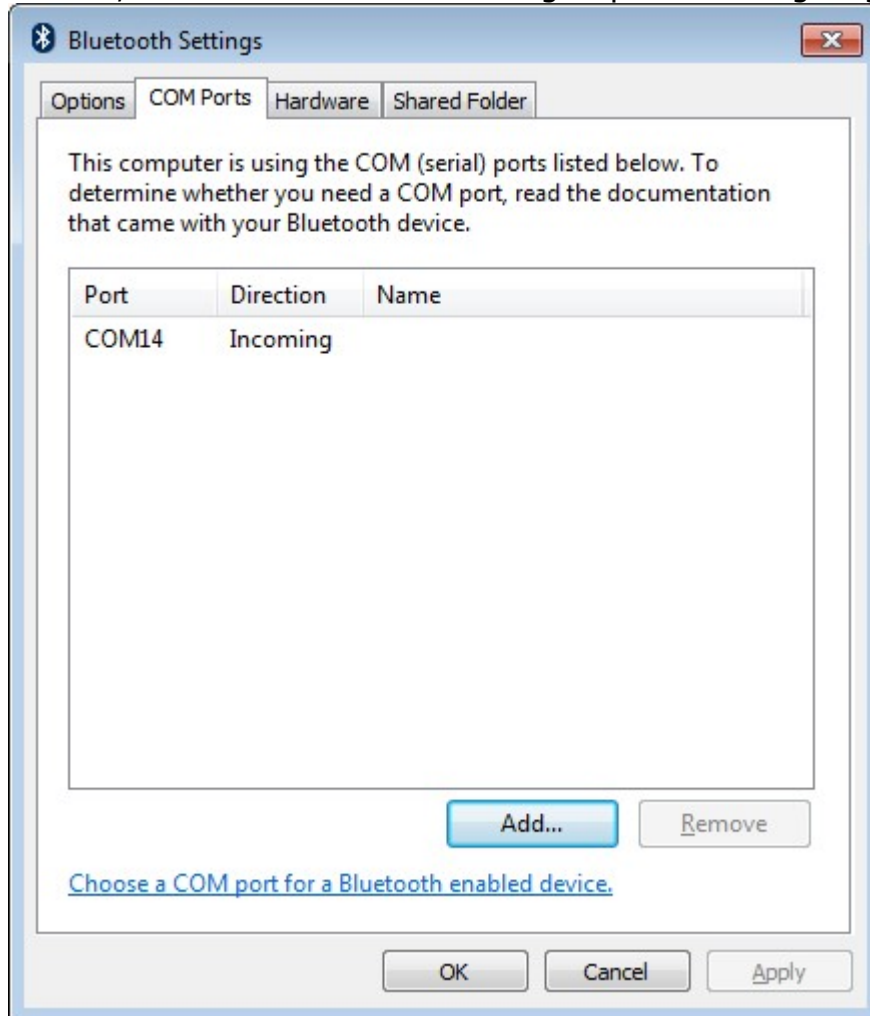
Select the tab **Com Ports** and press the Add button. Select **Incoming** (This is in most cases the default setting) and press ok





Pass App for Android
Installation Manual
v 1.0 – 25 /9/2019

After this, a com port should be created. Please make a note of the port number, this is needed in the following step when configuring Pass Link.





Configure Bluetooth – Configuring Pass Link.

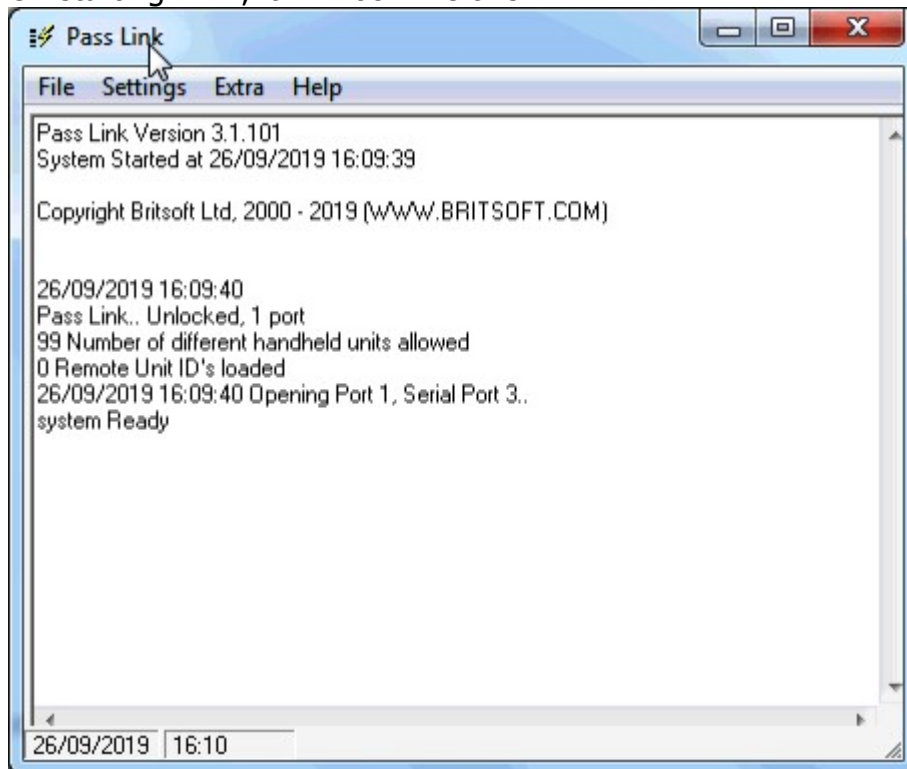
The Android app communicates with the PC through Pass Link.

This needs to set up using a few simple steps.

First of all start Plink.exe (you will find this in the start up menu in the Pass section.) Once started you can minimize it, it will go into the task bar.

Please note that Plink always needs to be running in order to provide communication support.

On starting Plink, it will look like this:



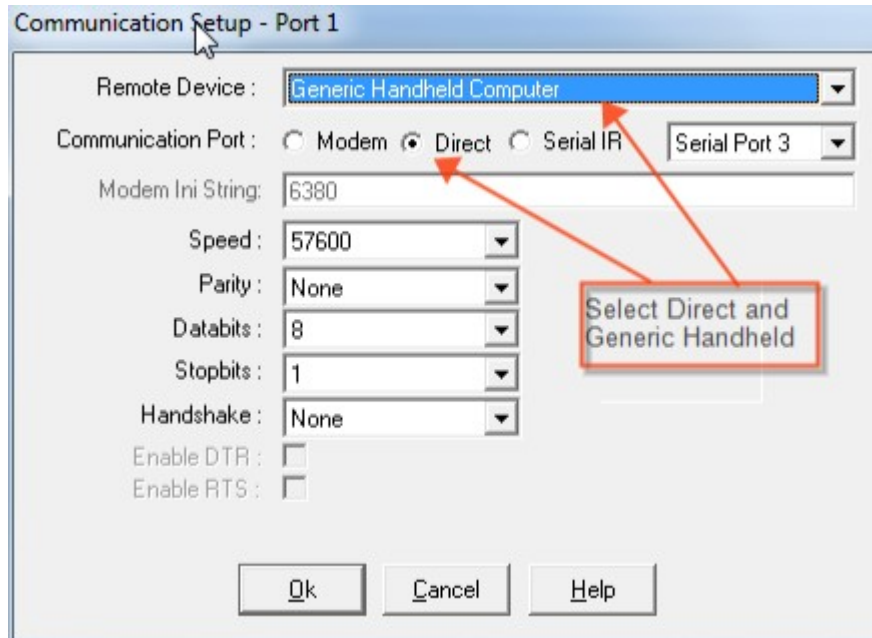


Pass App for Android
Installation Manual
v 1.0 – 25 /9/2019

Select Settings / Communication / Port 1

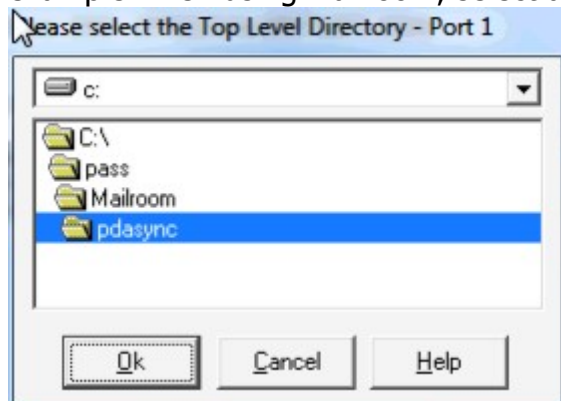
In Remote device, select **Generic Handheld computer**

Select **Direct** on the line under it and select the Com (Serial Port) you created in the Bluetooth section.



After this, select Settings / Data / Port 1

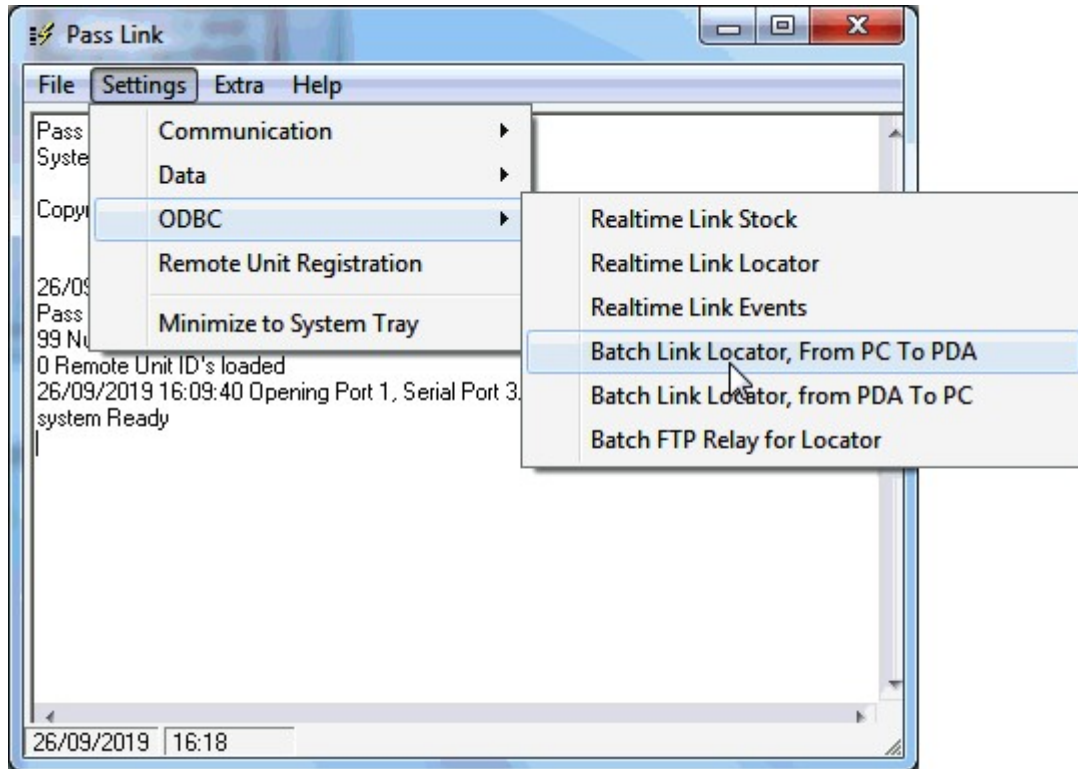
Select the **pdasync** folder under the application that you want to use. (for example when using Mailroom, select as below:



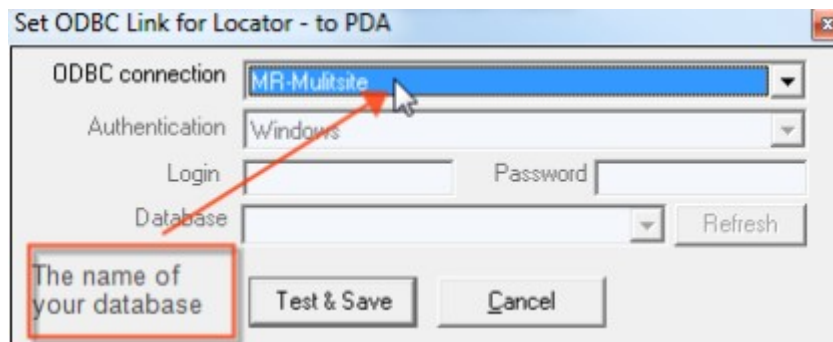


Pass App for Android Installation Manual v 1.0 – 25 /9/2019

Now you need to configure from which database the data (users, items, stock, locations etc) needs to be transferred to the pda.
Select Settings / ODBC / Batch Link Locator, from PC to PDA



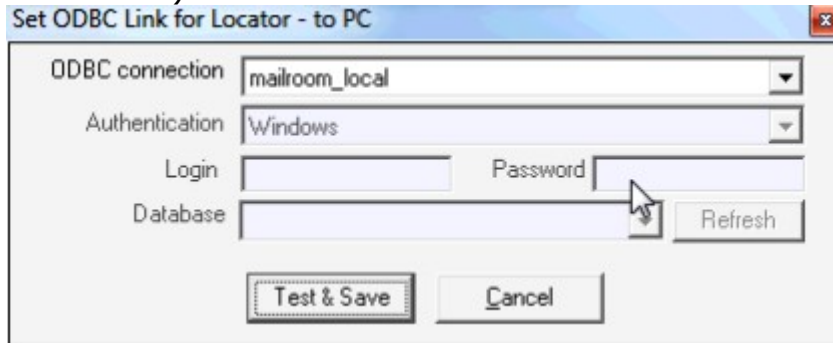
Select the relevant database





Pass App for Android
Installation Manual
v 1.0 – 25 /9/2019

After this you need to select Settings / ODBC / Batch Link Locator, from PDA to PC, in order to specify where the data needs to go from the PDA. For this always select the local database (for example mailroom_local in case of Mailroom)



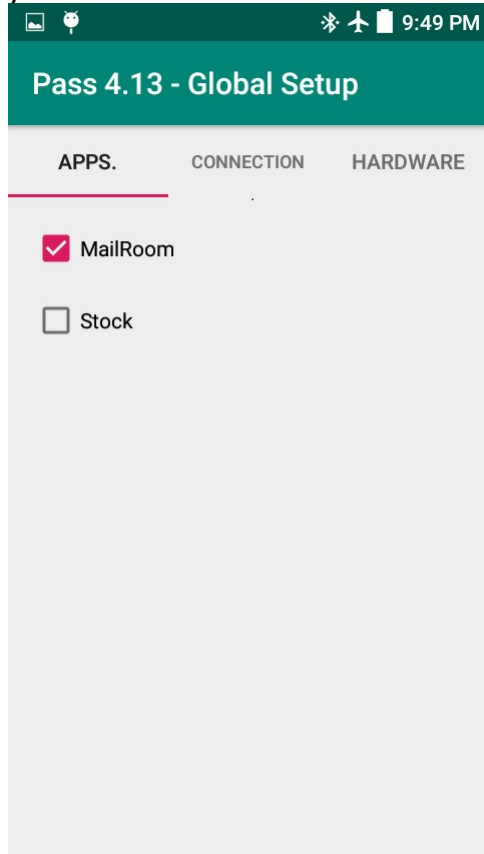
After these steps, restart Pass Link. Now Pass Link is ready to send and receive data.



Pass App for Android
Installation Manual
v 1.0 – 25 /9/2019

Configuring the Android Application.

After installation of the app on the Android device, start it (its called 'Pass')
On the main screen, first go to Setup, on the Apps tab select the application
you want to use.

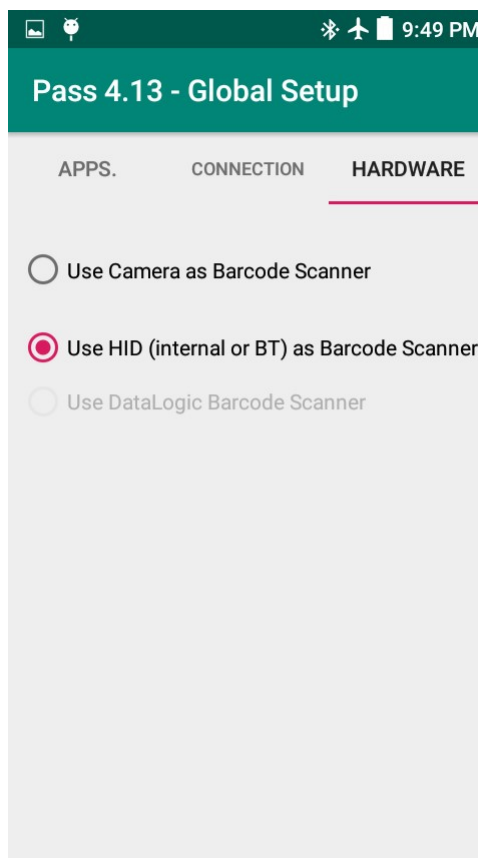
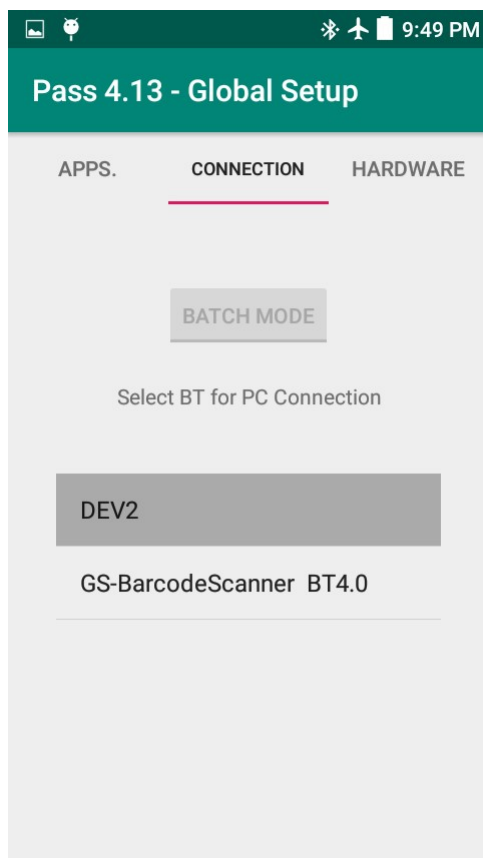




Pass App for Android Installation Manual v 1.0 – 25 /9/2019

On the Connection tab, select the PC you have installed Pass Link on. This way the PDA app knows how to communicate.

On the hardware tab, select which hardware you are going to use to scan barcodes. If you only have a Camera, then you can use the Camera to scan barcodes. The first time you try to scan a barcode, it will ask you to install an external Barcode Scanner app from the play store. If you have a external Barcode scanner attached via Bluetooth HID, or have an internal scanner that you use as a wedge scanner, then select the HID option. Some equipment is supported natively and will enabled depending on detection. Currently we support natively the Datalogic scanners, from for example the Datalogic Memor range.



After this, press the back button (little triangle arrow button at the bottom of the screen, or separate button) to go back to the main menu. Now you can start your desired application.